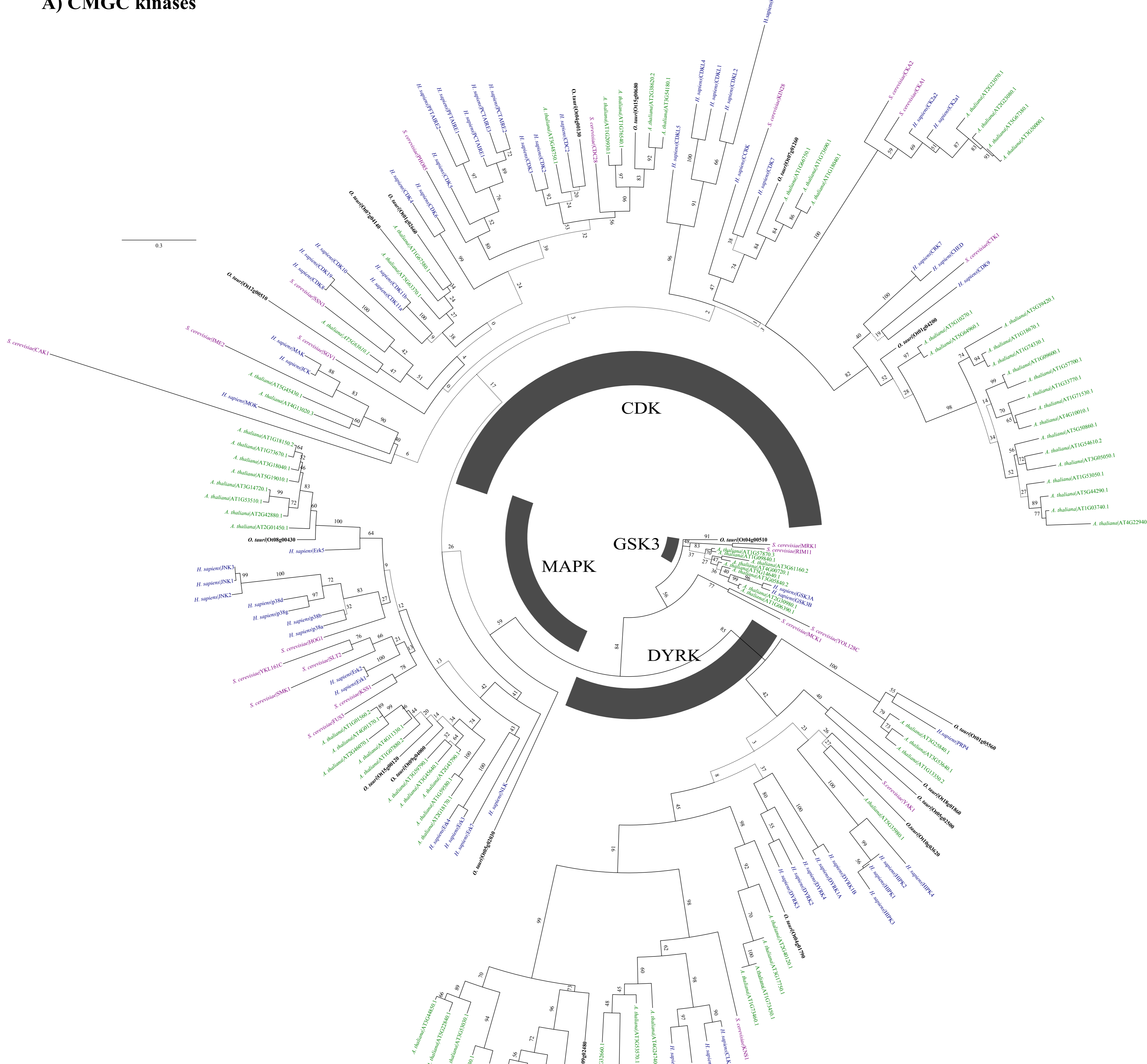


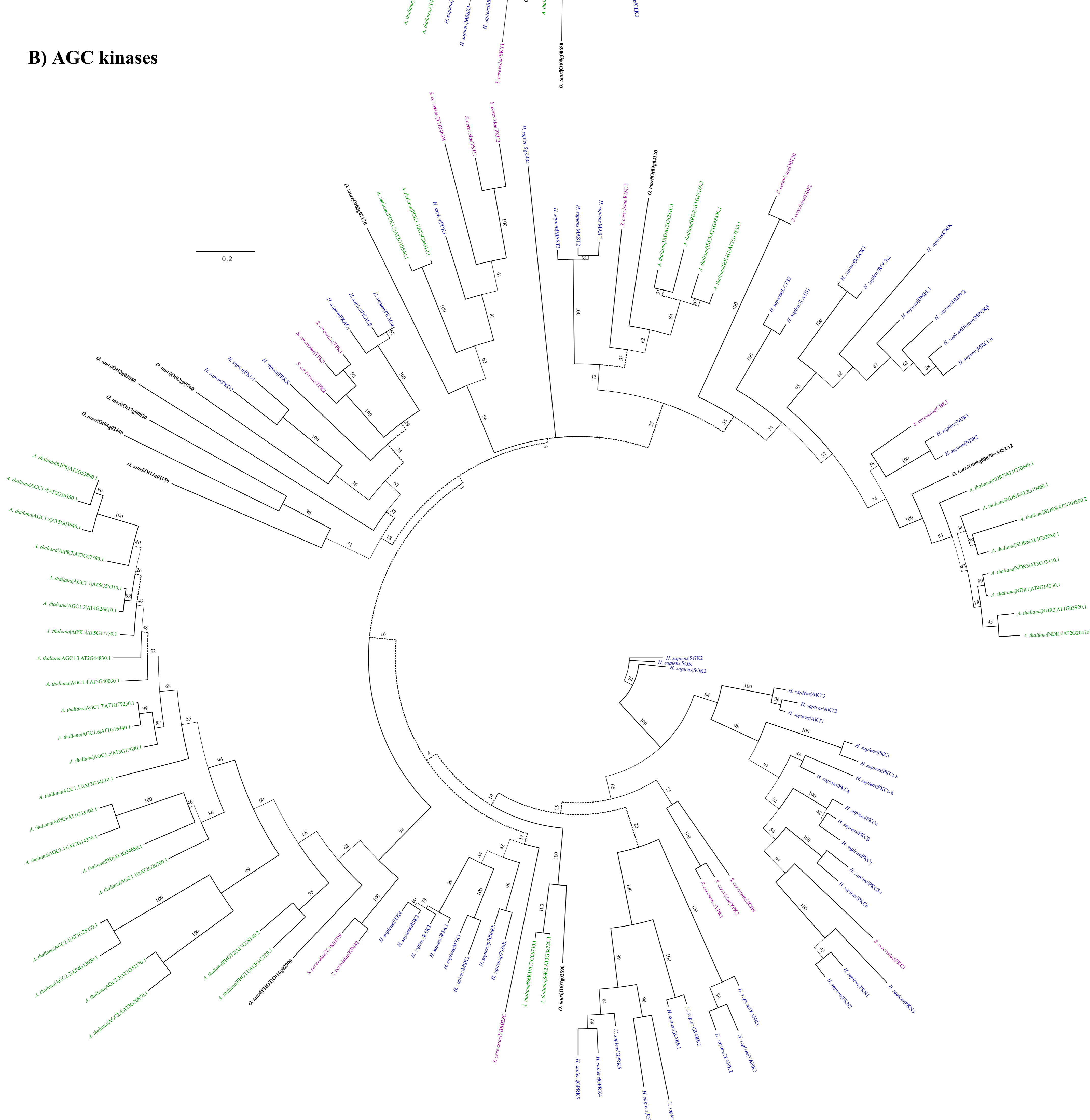
## Phylogenies of the main kinase families

The following radial trees provided the initial guides for assigning *O. tauri* kinases to families. We have included *H. sapiens*, *S. cerevisiae* and *A. thaliana* members of each family, where appropriate. The topologies of these families guided the selection of proteins for the more specific phylogenies in this paper. *H. sapiens* and *S. cerevisiae* kinases are labelled according to their KinBase identifiers. *A. thaliana* kinases are labelled with TAIR gene names and AGI gene model accession. Bootstrap confidence is assigned to edges. Broken line edges indicate regions of low confidence (<40 bootstrap confidence).

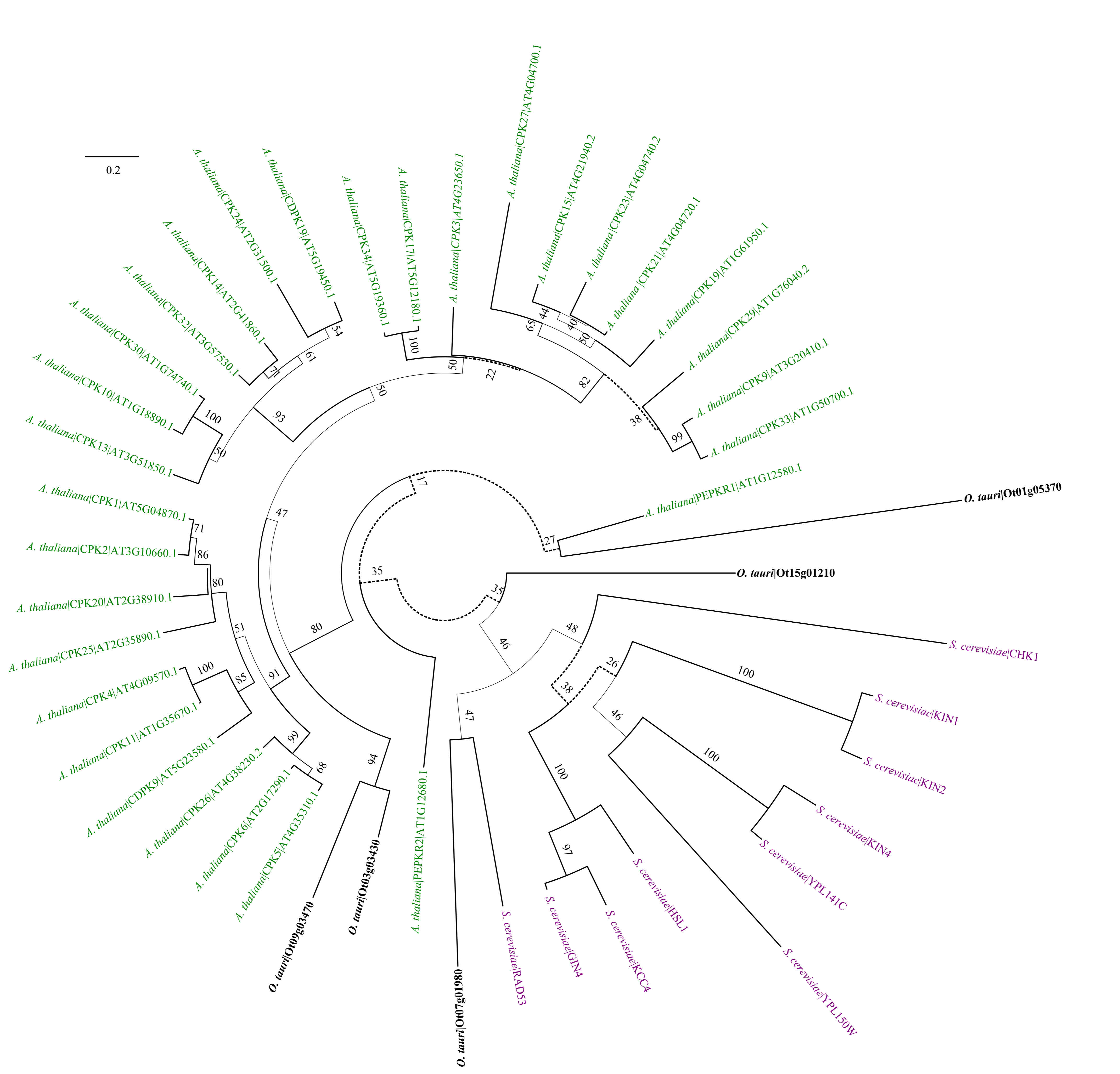
### A) CMGC kinases



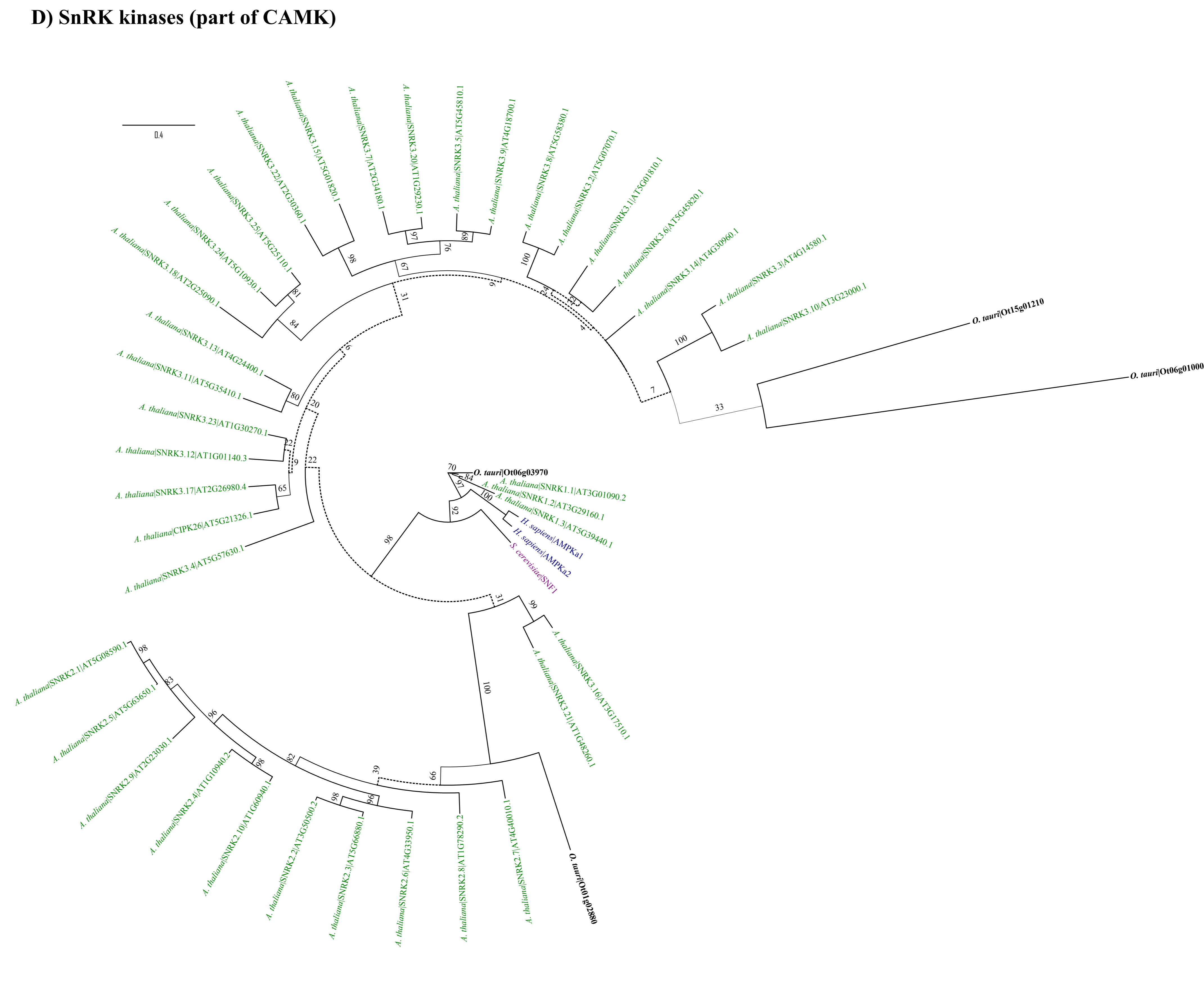
### B) AGC kinases



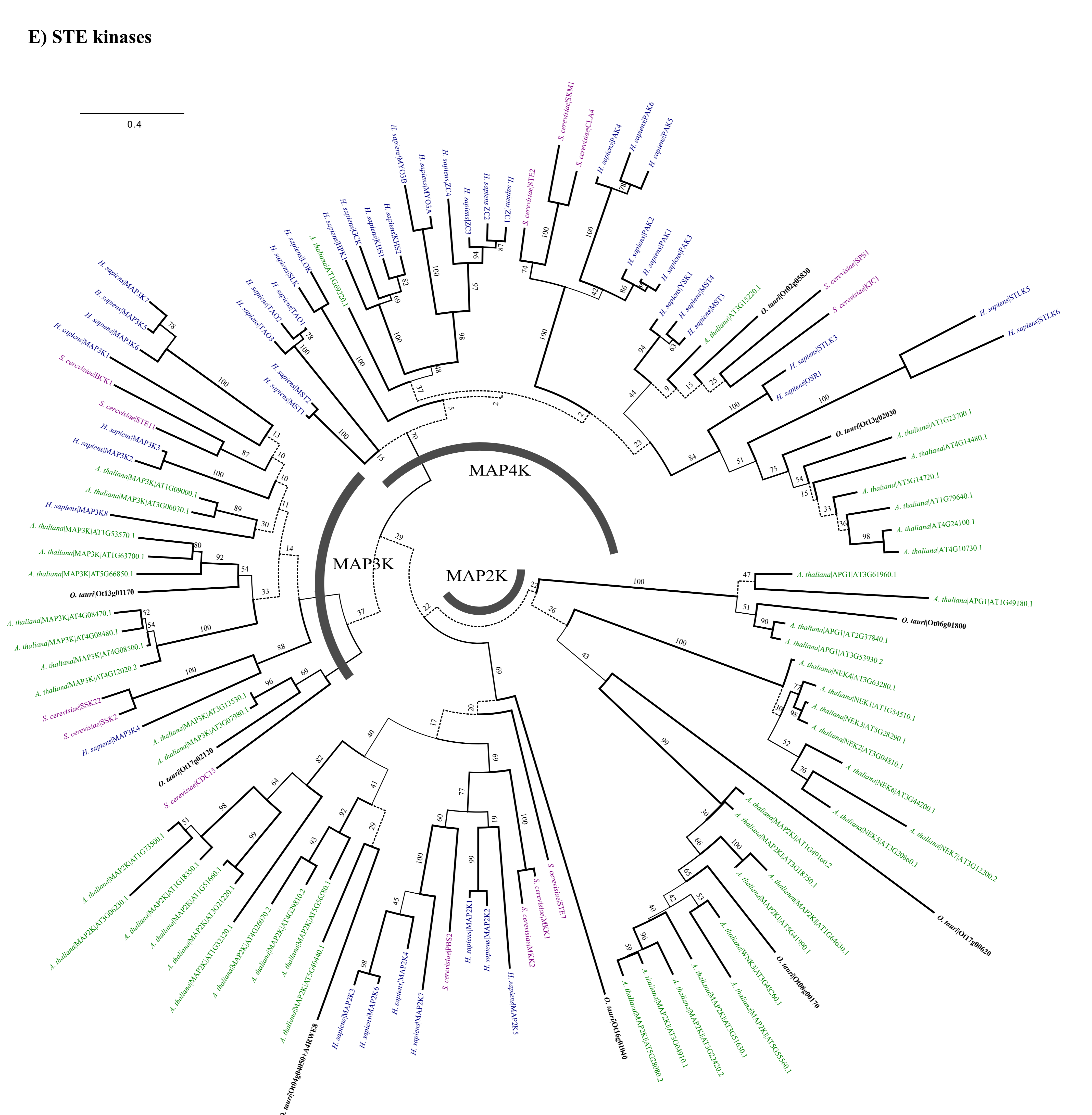
### C) CPK kinases (part of CAMK)



### D) SnRK kinases (part of CAMK)



### E) STE kinases



### F) CK1 family of kinases

